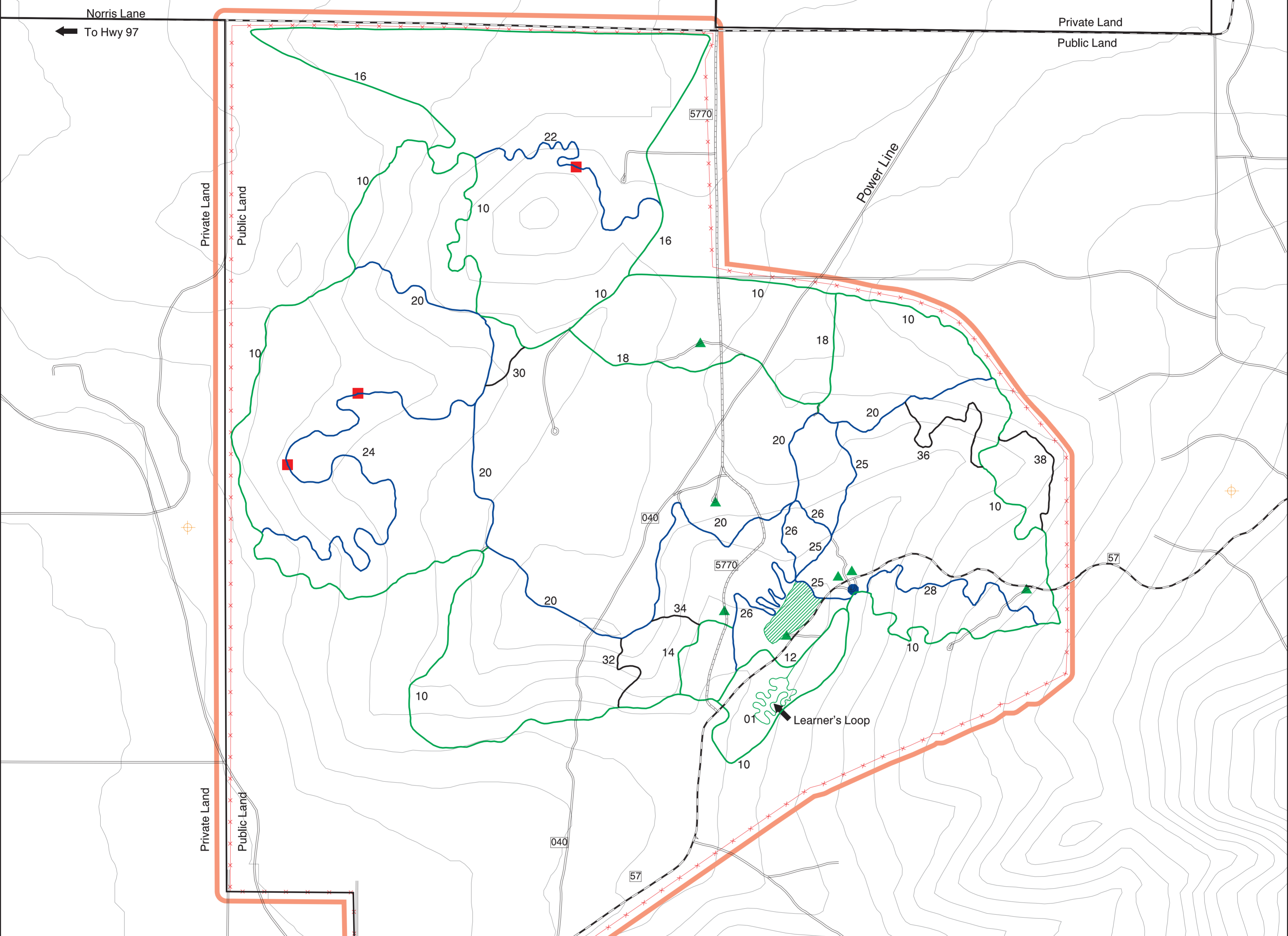


# HENDERSON FLAT OHV TRAIL SYSTEM



**Season of Use**  
 Open: April 1 - November 30  
 Closed: December 1 - March 31 to protect soils.  
 Any trail closures or changes in use restrictions will be posted on the map boards at the trailheads and staging areas.

**Location**  
 Township: 13 S.  
 Range: 13 E.  
 Section: 14, 15, 22, 23  
 The future of this trail system depends on you! Respect the land, the wildlife, and the rights of others. Tread Lightly!



**How To Get There**  
**From Madras:**  
 Drive south on Highway 97 for 13.0 miles. Turn left on Norris Lane and travel east for 2.3 miles.  
 OR  
 Drive south on Highway 97 for 14.9 miles. Turn left on Park Lane and travel east for 2.3 miles.

- Legend**
- OHV Trail System Boundary
  - Easiest Trails
  - More Difficult Trails
  - Most Difficult Trails
  - x Fence
  - ▲ Campsite
  - Staging Area
  - Viewpoint
  - ▨ Play Area
  - 6080 Main Road Numbers
  - 30 Trail Numbers

